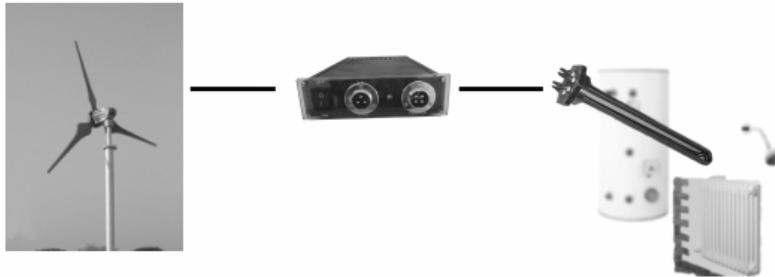




# TAOS WIND HEATING SYSTEM TWH-2

TAOS wind heating system TWH-2 is a very available system based on creative TAOS wind turbine.

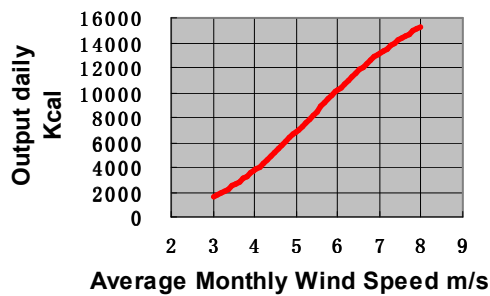
TWH-2 is mainly used as secondary heating for oil/gas boiler to save energy bill and reduce CO2 emission.



TWH-2 is an efficient and available system. It could produce caloric value nearly 10000 Kcal daily in months of average wind speed of 6 m/s, say, to heat water of 200 litres raising temperature about 50 °C and mitigate CO2 over 20KG daily.

TWH-2 is an economy system. The system cost is lower much than battery-charging system and wind grid-tied system with comparative output.

**TWH-2 Daily Output  
Averagely**



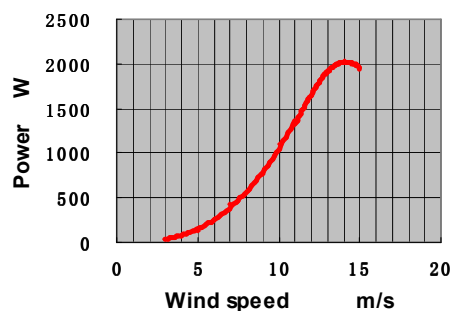
## *Wind Turbine TAOS2000R for TWH-2*

TAOS2000R is an creative downwind passive yawing set. Without tail van and any mechanical protection set, it is compacter, more reliable, and more sensitive.

### *Specification*

Rotor diameter	2.8m
Start-up wind speed	3m. s <sup>-1</sup>
Cut-in wind speed	2.6m. s <sup>-1</sup>
Rated wind speed	12m. s <sup>-1</sup>
Survival wind speed	60m. s <sup>-1</sup>
Rated output	2000W

**Power curve of TAOS2000R**





### Feature

- Rotor blades from super-strength engineering plastic; shaped by precision injection moulding process.
- Alternator with high grade NdFeB permanent magnets.
- Excellent low wind performance; High energy efficiency.
- Downwind passive yawing structure design without tail-van (pat.); Only two pairs of moving part; More compact and more reliable; Ability to ‘catch’ wind is high much owing the lower yawing inertia.
- Maintenance free design.



### Controller R2000R for TWH-2

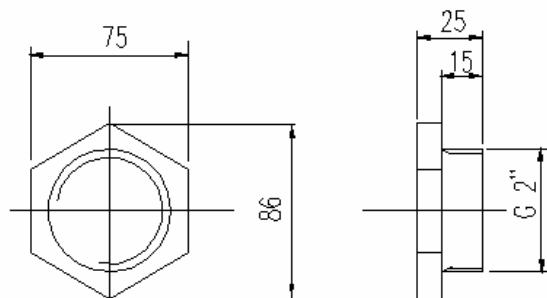
#### Feature

- Rectify 3-phase AC output of TAOS2000R into DC.
- Based on creative programmed microprocessor, follow and regulate the state of whole system in optimum efficient point all along; brake wind turbine when upto overvoltage / overload / overspeed to protect wind turbine and heater, and restart wind turbine in a braking period nearly 30 minutes.
- A manual run/stop switch.



### Heater for TWH-2

The heater for TWH-2 and its flange dimensions are shown as in figure.



TUBE THREAD G2" : MAJOR DIA.59.616  
 PITCH DIA. 58.137  
 MINOR DIA. 56.659  
 11THREADS/INCH WHITWORTH PROFILE

---

### TAOS WIND ENERGY CO. LTD

Tel/Fax 0086 571 87291628

E mail [taosho@126.com](mailto:taosho@126.com)

[www.taoswind.com](http://www.taoswind.com)

[info@taoswind.com](mailto:info@taoswind.com)